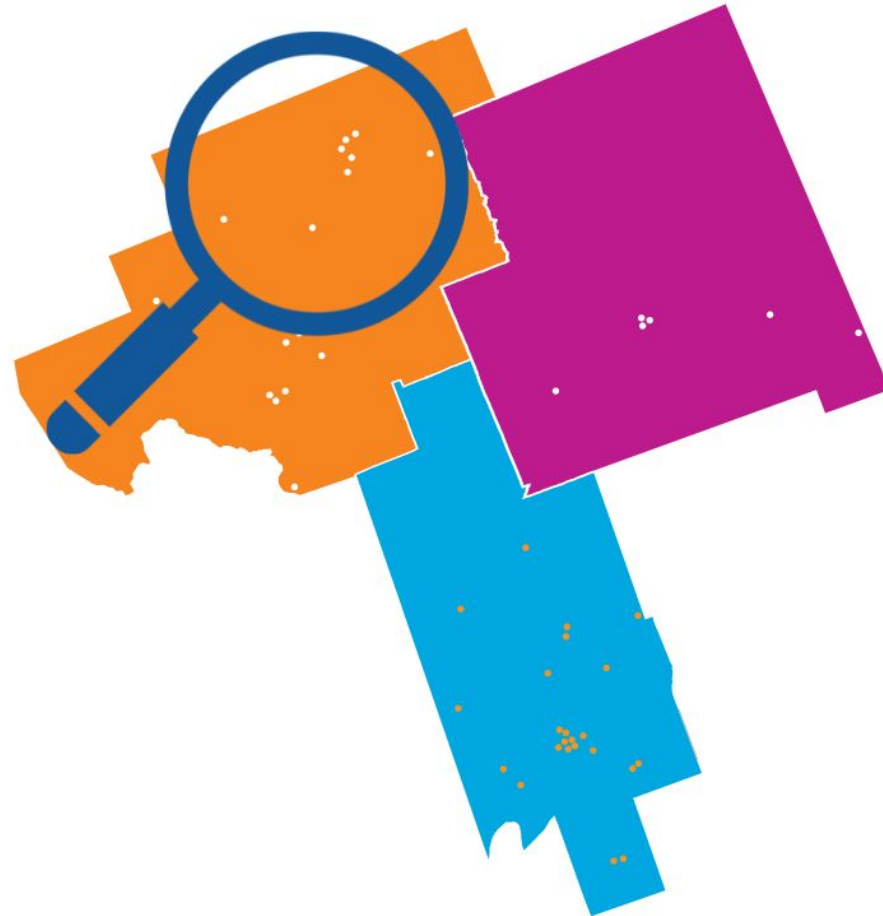


BOUNDARY REVIEW

Huntsville Public School
Riverside Public School



What is this review all about?

Boundary areas are reviewed to balance school enrolment and capacity, minimize transportation, and maximize walk zones.

A review may be conducted to evaluate attendance, enrolment, programming, new construction and/or other factors

Current grade distribution:

- Riverside Public School French Immersion has Grades 1-4
- Huntsville Public School French Immersion has Grades 5-8

What is this review all about?

This review is to look at how we can effectively utilize spaces and resources.

At both schools, we are looking at:

- School facilities
- Programs offered
- Any limitations

Overall, we want to provide the best possible programming for our students.

We are not adjusting the school catchment area boundary for either school.

Students in the English program are not affected by this review.

Proposed option

We are looking at a phased in approach so that students do not move back and forth from Riverside Public School to Huntsville Public School starting in September 2024.



Programming considerations

Special Education

With any change, our staff will reflect the needs of the students.

Child care

We expect there will be no change to before and after care.



Space considerations

Physical space

The gym at Riverside Public School is a double sized gym which allows more classrooms to use it throughout the day.

Riverside also has a much larger outdoor space and more parking spaces than Huntsville Public School.



Time and staff considerations

Timing

Any changes will be effective September 2024.

This allows for families to make child care adjustments, if needed.

We are looking at a phased in approach so that students do not move back and forth from Riverside to Huntsville Public.

Staffing

The Board's Human Resources Services department will follow the collective agreement provisions with our staffing groups to address any staffing change.

Why not have all French Immersion grades together?

This is a grade distribution review for French Immersion between the two schools due to overall capacity. Our English program students are not part of this review.

Riverside Public School does not have the capacity to house all Grade 1 to Grade 8 French Immersion students under one roof.

Next steps

We are at the beginning stages of this review.

Following this meeting, we will develop options that we'll take to the trustees at the June Regular Meeting of the Board.

Families will be made aware of the outcome of the review and if there is a change to the grade distribution, it will take effect September 2024.

Q & A



We welcome your feedback

Visit tldsbc.ca/hps-rps/ for the feedback form or scan this code with your phone camera.

You can also email your feedback to info@tldsbc.on.ca.

The form closes on Friday, May 19, 2023.

