

# BOUNDARY REVIEW

Dr. George Hall Public School  
Jack Callaghan Public School  
Mariposa Elementary School



# What is a boundary review?

TLDSB establishes school catchment areas within specific boundaries to help balance school enrolment and capacity, minimize transportation, and maximize walk zones.

In this review, we are looking at the school facilities, programs offered, and any limitations at all three schools.

Overall, we want to provide the best possible programming for our students.



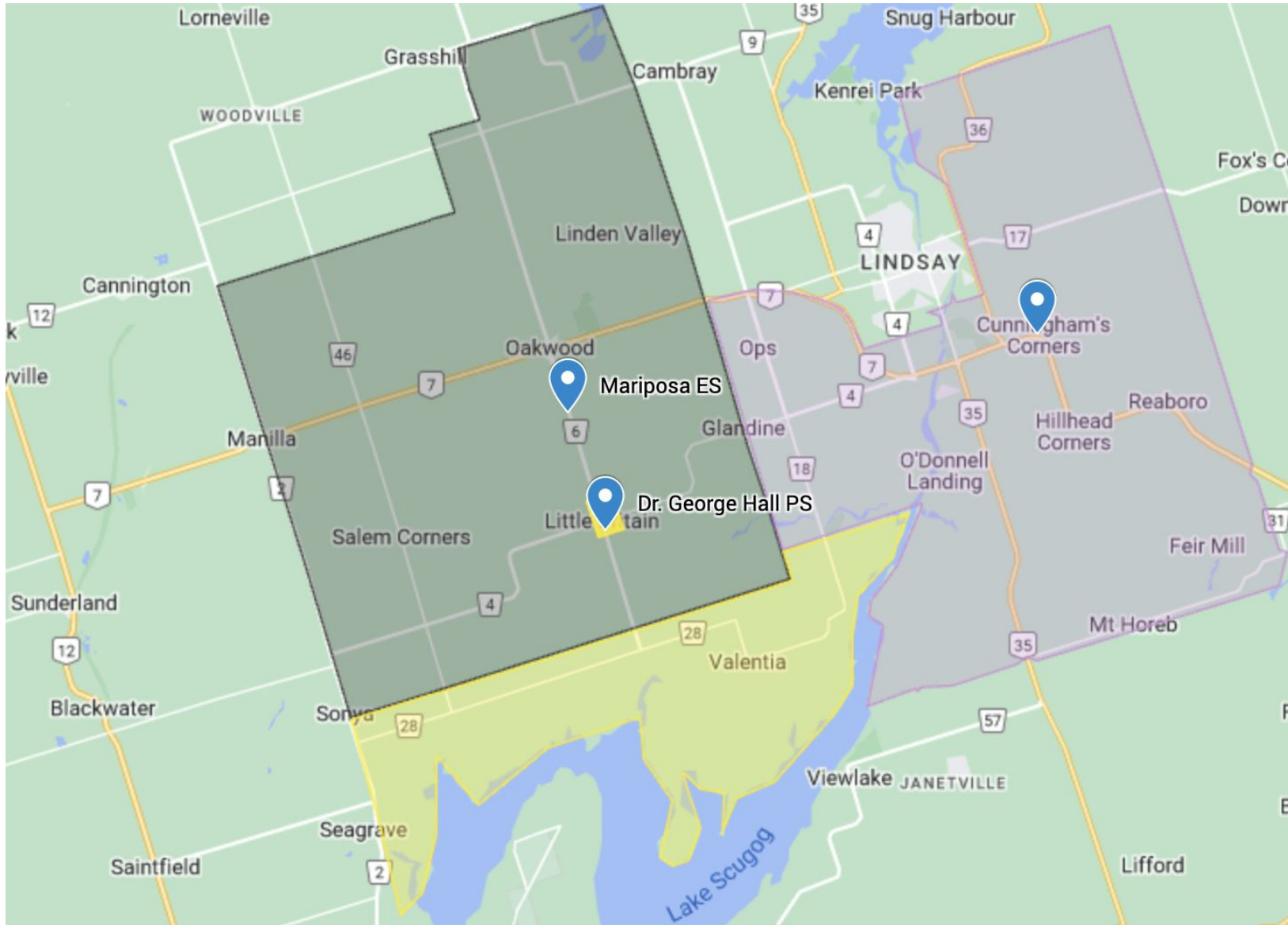
# Why are we conducting a boundary review?

We are conducting this review now as we plan ahead for growth in the area – there are many new housing developments underway in Lindsay.

Over time, these boundaries have been formed and revised based on older school catchment areas with the original historic school houses established in the area.

Currently, the boundaries do not align well with our student populations and communities.

# Current school boundaries

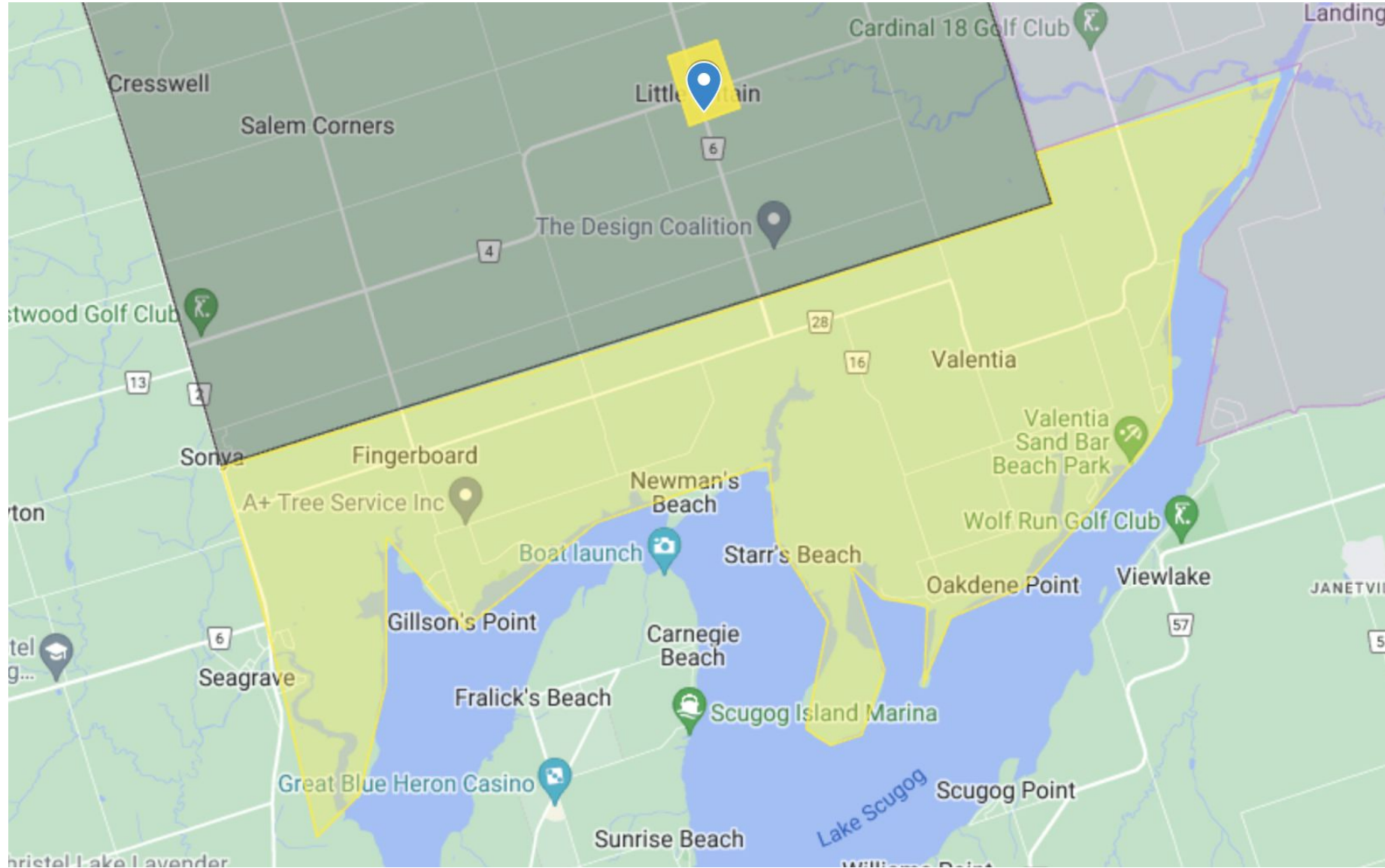


Green = Mariposa ES

Yellow = Dr. George Hall PS

Pink = Jack Callaghan PS

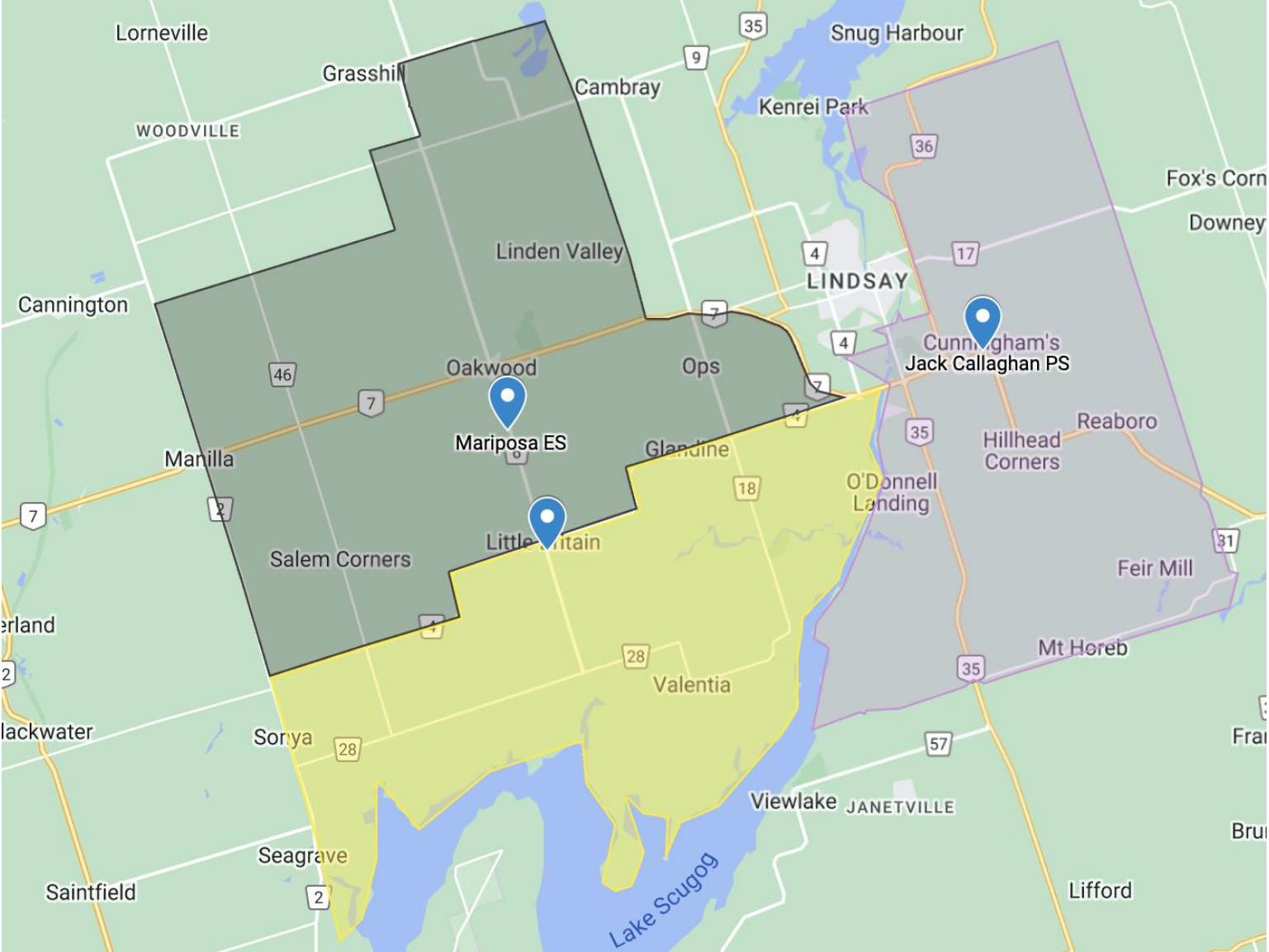
# Closer look at Dr. George Hall boundary







# Proposed option 2



Green = Mariposa ES  
Yellow = Dr. George Hall PS  
Pink = Jack Callaghan PS



# School considerations

All three schools have:

- Modern buildings
- Large outdoor spaces
- Vibrant libraries
- Large gymnasiums
- Accessible spaces



# Program considerations

All students will continue to be well-served and receive high-quality learning experiences.

The staff at all three schools take great pride in ensuring our schools are safe and welcoming places for students.

We expect there will be no change to before and/or after care. We are creating the plan for September 2024 so that families have time to make child care adjustments, if needed.

We will continue to monitor enrolment at all schools to ensure all spaces and programming continue to be best suited for our students.

# Legacy/grandfathering

We're looking at the option of allowing the few students enrolled in Grade 6 this school year to stay at their current school to finish their educational journey to Grade 8 with their peers.

We are also looking at allowing our incoming Junior Kindergarten students to enroll in their future home school for this September (2023).

We are considering allowing families to choose their future home school so that they do not need to make a change the following year. If this change is not chosen, the families who enrolled at their current home school will be required to move the following year to the new home school.

# Next steps

We are at the beginning stages of this review.

Following this meeting, we will develop options that we'll take to the Board of Trustees at the Regular Meeting of the Board in June.

Families will be made aware of the outcome of the review following the Board meeting with changes to take effect September 2024.

# Q & A



# We welcome your feedback

Visit [tldsbc.ca/dghps-jcps-mes/](https://tldsbc.ca/dghps-jcps-mes/) for the feedback form or scan this code with your phone camera.

You can also email your feedback to [info@tldsbc.on.ca](mailto:info@tldsbc.on.ca).

The form closes on Friday, May 19.

